



St Anne's Catholic Primary School



Weekly School Newsletter

Friday 9th February 2024

 @SAINTANNESCPS



WEEKLY NEWS

Wow I cannot believe that we have reached half term already! Another really busy but fantastic half term. This week we had great sporting success with our football and netball teams winning their matches as well as some children in Year 6 taking part in a rowing competition. Our girls came 4th and our boys 11th out of 20 schools! Well done to all the children that have represented the school this week we are very proud of you! Huge thank you to Mr Whelan and Ms Maguire for supporting the children.

Next week we enter the season of Lent - each week in church Father will be leading the Station's of the Cross at 6pm each Friday and all families are invited to attend. The Monday we return after half term we will have a service for ashes to begin our journey of Lent together.

Have a lovely half term.



SCHOOL MASS



On Thursday 22nd February will be Year 5 & 6 mass at church at 9.30am everyone is invited.



SUNDAY MASS



Each Sunday Mass is celebrated at St Anne's Church at 9am.

OUR WEEKLY MISSION

This week we have been thinking about how we can share the love of God to others.



GOSPEL VIRTUES

This half term pupils are growing to be **compassionate** and **loving**.



[Wednesday Word Link](#)

Love one another, as I have loved you, in our home, school and parish families.



DATES FOR YOUR DIARY



Monday 19th February

All children return to school

Tuesday 20th February

Whole School Retreat Day
with One Life Music

Friday 23rd February

Year 4 assembly – 9am

Thursday 7th March

World Book Day

Saturday 1st June

First Holy Communion Mass

NOTICES

24-25 TERM DATES

The new term dates will be sent out shortly. Once they are agreed by our school governors, for the next Academic year. Please see the attached dates that will run up until this Summer term..

PARENT CONSULTATIONS

Please ensure you return the booking form to your class teacher.

SCHOOL UNIFORM

Please remember to label all items brought into school, with your child's name and year group.

Please can children be wearing school shoes and not trainers when it is a normal uniform day.

The only jewellery allowed in school is stud earrings. Thank you for your support.

NURSERY APPLICATIONS

We are currently accepting registrations for our Nursery in September. If your child is turning 3 after the 31st August 2024 they will be eligible for a fully funded 15 hours per week place. If both parents are working a minimum of 16 hours per week you could be eligible for 30 hours. Please collect a registration form from the school office if you would like a place. We currently offer morning, afternoon or full day places. Should you have any questions regarding funding please contact the school office.



STARS OF THE WEEK

Reception	Year 1	Year 2	Year 3	Year 4	Year 5	Year 6
Efi & Eldana	Ava-Jade & Eva-Maria	Adele & Leo	Fabio & Mickey	Frankie-Mae & Greg	Lalonie & Kaiden	Jonathan & Brooklyn

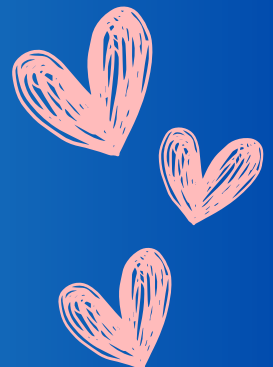
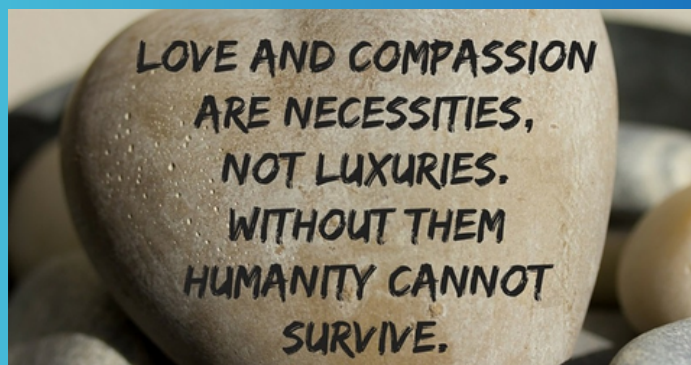
Virtue Nominations

Rory – Rory was loving towards his brother on the playground.

Gracie-Rae – Gracie-Rae was loving towards her friends in the classroom.

Efi- showed compassion to her friend who wanted to play with a hoop. There were none left so she gave them hers.

Hunter – for showing compassion when a friend fell over, helping her and making sure an adult knew so we could help her too.





Ariella - YR1
Chenuri - Y5
Agozi - N
Hughie - Y3
Abdul - Y1
Jonathan - Y6
Kaiden M - Y1
Etienne - Y5
Charitie - Y3
Jethro - N
Elijah - N
Arsema - Y1
Eliya - Y4



St. Anne's Catholic Primary School

Terms and Holidays 2023/2024

Term	Pupil Dates	Staff Training Days (children not in school)
Autumn 1: 2023	Children start the new school year on Tuesday 5 th September 2023 – Thursday 26 th October 2023	Friday 1st September 2023 Monday 4th September 2023 Friday 27th October 2023
HALF TERM	Monday 30th October – Friday 3rd November 2023	
Autumn 2: 2023	Children return on Monday 6 th November 2023 – Friday 22 nd December 2023	
CHRISTMAS BREAK	Monday 25th December – Friday 5th January 2024	
Spring 1: 2024	New Year Bank holiday: Monday 1st January 2024 Children return Tuesday 9 th January 2024 – Friday 9 th February 2024	Monday 8th January 2024
HALF TERM	Monday 12th February 2024 – Friday 16th February 2024	
Spring 2: 2024	Children return on Monday 19 th February 2024 – Friday 22 nd March 2024	
EASTER BREAK	Monday 25th March 2024 – Friday 5th April 2024	
Summer 1: 2024	Children return on Monday 8 th April – Friday 24 th May 2024 May Day Bank holiday: Monday 6th May 2024 Spring Bank holiday Monday 27th May 2024	
HALF TERM	Monday 27th May 2024 – Friday 31st May 2024	
Summer 2: 2024	Children return on Tuesday 4 th June – Friday 19 th July 2024	Monday 3rd June 2024

**** Staff training days are subject to change. ****

SYMPTOMS

High temperature



Runny nose



Cough



Sore red eyes



Rash



NHS

Measles is circulating

- Measles is extremely infectious and can be serious
- Unvaccinated young children, pregnant women and people with weak immune systems are at greatest risk of severe health complications if they catch measles.
- Symptoms include:
 - high temperature (fever)
 - cold like symptoms such as runny or blocked nose, sneezing or coughing
 - sore, red, watery eyes
 - a blotchy red brown rash, which usually appears a few days after cold like symptoms (sometimes starts on the face before spreading to the rest of the body). The rash may be harder to see on darker skin tones.
 - small white spots inside cheeks and the back of lips (may appear for a few days)
- If you or your child have symptoms of measles, stay at home and phone your GP or NHS 111 for advice – as you could easily spread the virus to others
- If you need to visit your GP or hospital, call ahead to let them know that it could be measles – they will make special arrangements for your arrival to help keep other patients and staff safe.

SYMPTOMS

Rash



High temperature



Runny nose



Sore red eyes



Cough



NHS

Measles:

Protect yourself and your family

- Measles, mumps and rubella (MMR) vaccination is the safest protection against measles.
- Two doses of MMR offers the best protection against measles and is free.
- If you have not had two doses of MMR, you can ask to get them from your GP surgery.
- Check to see whether your child has had their two doses just after their 1st birthday and again before starting school.
- For people who do not touch any pork products, there is a version of the MMR vaccine which does not use porcine gelatin in its production.
- Know the symptoms and keep people with symptoms away from others.
Visit www.nhs.uk/conditions/measles for more measles information.

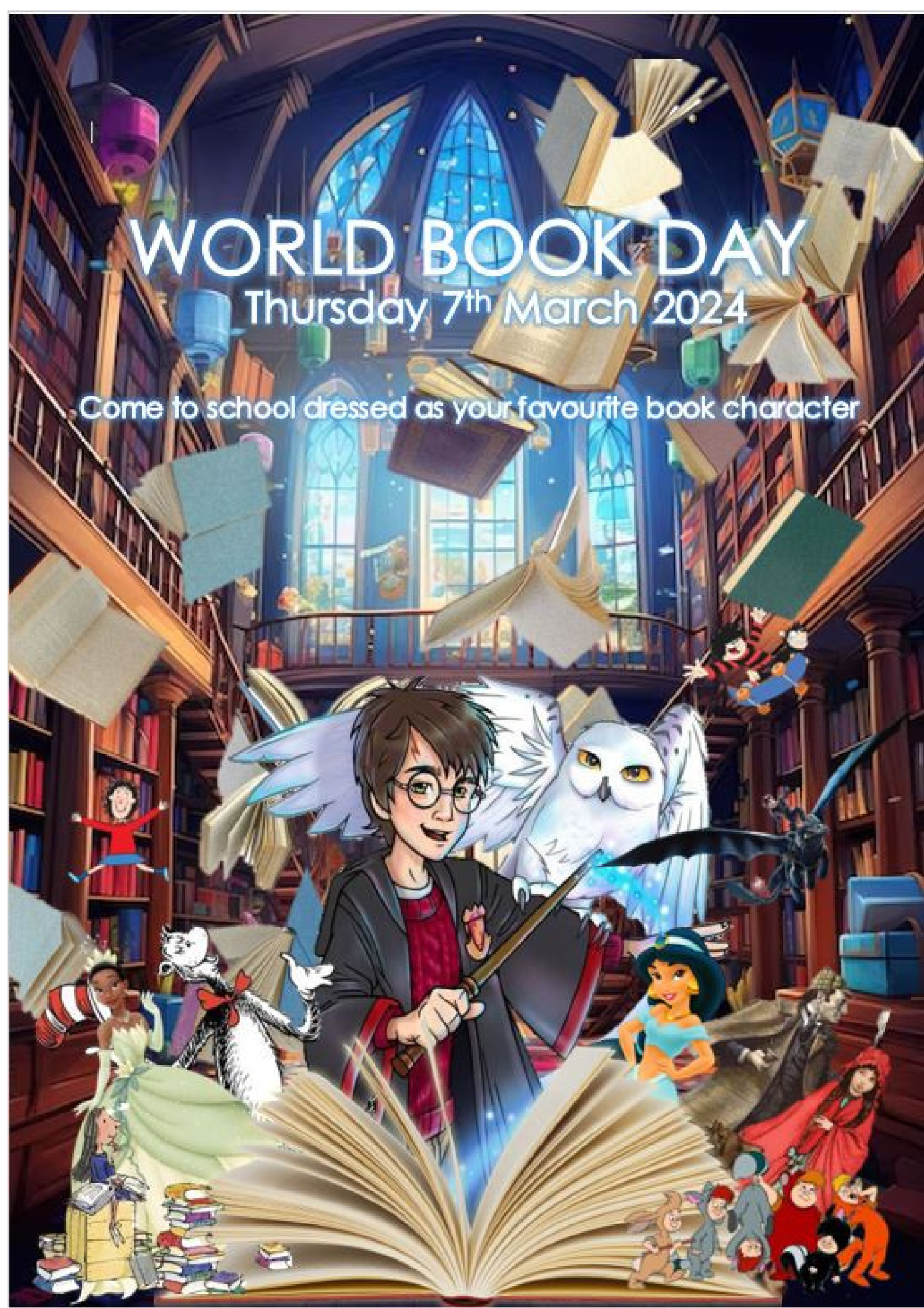
SPEAK TO YOUR GP IF:

- Your child or someone in your family has missed their first or second dose of the MMR vaccine.
- You or someone in your family show symptoms of measles.

WORLD BOOK DAY

Thursday 7th March 2024

Come to school dressed as your favourite book character





2nd February 2024,

Dear parents,

We are looking at healthy travel and safety for children on their journey to and from school. St Anne's takes the safety of our children very seriously and has identified that the area immediately around the school entrance(s) can be at times unsafe for the children when they arrive at or leave school.

This is because of the inappropriate parking, particularly on the zig zag lines and where there are double yellow lines. The zig zag lines are there so that children can have a clear field of view to see traffic approaching and likewise, drivers have a clear view of any children who might wish to cross the road.

If the zig zags are blocked by inconsiderate parking, then neither driver nor child can see each other and the risk of an accident is greatly increased. Where there are cones we ask that these areas are kept clear. The cones are along the corners of the junctions. We have witnessed cars parked on corners of junctions and up on the pavement. This again blocks the view of drivers coming out or entering Dunsmore Avenue. As the zebra crossing is so close to the junction everyone must have a clear view. Parents should not stop and drop off at the zebra crossing, other cars may think you have stopped and drive around you and may not see one of our precious children crossing the road. We just dread to think of what the outcomes could be.

Ideally, every child would walk or cycle to school each day, but we realise, this is not always possible. Sometimes children need to be driven to school as some live too far away to walk or parents have other commitments. If you do need to drive, we would ask that you commit to parking safely in an appropriate place away from the school entrance so as to help protect all members of our school community.

We would also ask that you show consideration to our neighbours by not blocking the entrance to their properties. By working together, we can make our school safer and healthier for everyone.



Thank you for your support in this matter.

Mrs Batson

Headteacher.

FEBRUARY HALF TERM

Monday 12th to Friday 16th February

EASTER

WEEK 1 Monday 25th to Thursday 28th March

WEEK 2 Tuesday 2nd to Friday 5th April



Active Kids Courses!

COURSE TIMES 9am to 4pm

Early Drop off
8 to 9am

Late Pick up
4 to 5pm

+£3
Per Session

ONLY
£17
per day